

Instruction for use

Please follow the following instruction for your safety and long term use.

CAUTION

❗ If using outside, avoid the Music Pads getting wet or damp. You may slip and get injured. Please keep the Music Pads dry at all times.



❗ Use this instrument on a flat, dry surface to avoid any risk of damage or accident. Avoid wearing shoes when using the feet to play the notes.



❗ Do not throw or swing the Music Pad around. You may injure yourself or others or damage the Music Pads.



❗ Do not throw or swing around the pad. You or your friend may get injured.

❗ Avoid sharp objects near the instruments which could result in damage to the Music Pads. Never use anything else (apart from the hands and feet) to 'strike' the Music Pads.



❗ Do not put any foreign objects or liquids inside the Music Pads. This will damage the reeds inside the instrument.



❗ Do not store or leave in situations where there are likely to be high temperatures or near any heat source such as radiator, cooker etc. The Music Pads could become deformed or damaged.

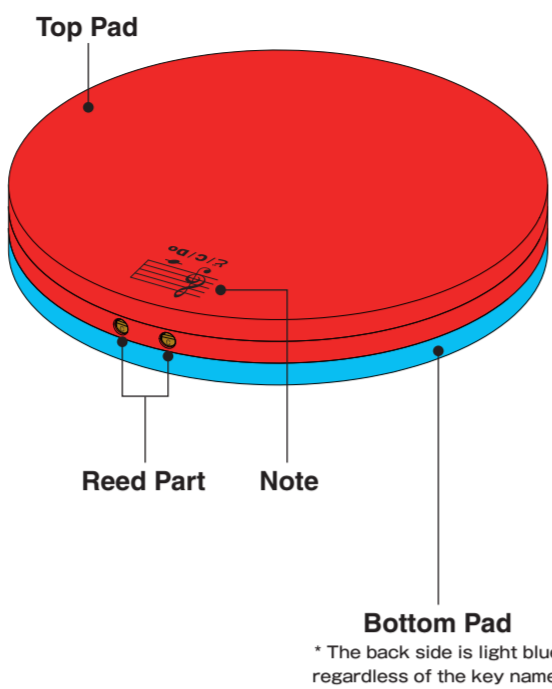


❗ Clean this instrument with a soft cloth which is slightly damp. Avoid using alcohol, thinner or any petro-chemical solution.

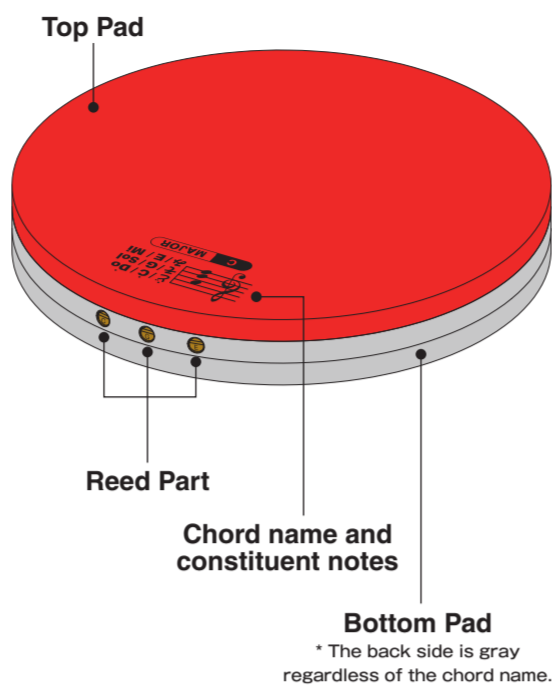


Part names

MUSIC PAD MP-8



CHORD MUSIC PAD MP-6C



SPECIFICATION

MUSIC PAD MP-8

RANGE	:	c ¹ to c ² , 1 octave 8 notes diatonic set
DIMENSION	:	30cm (11.81") in diameter, 4.2cm (1.65") in thickness
WEIGHT	:	300g / 1 piece
MATERIAL	:	EVA (It is fully complied with Food Product Health Law and Food & Additives standards)
NOTE COLOR	:	C(Red) D(Orange) E(Yellow) F(Green) G(Light Blue) A(Blue) B(Pink)

CHORD MUSIC PAD MP-6C

CHORD	:	6 chords C/Dm/Em/F/G/Am
DIMENSION	:	30cm (11.81") in diameter, 4.2cm (1.65") in thickness
WEIGHT	:	300g / 1 piece
MATERIAL	:	EVA (It is fully complied with Food Product Health Law and Food & Additives standards)
CHORD COLOR	:	C(Red)/Dm(Orange)/Em(Yellow)/F(Green)/G(Light Blue)/Am(Blue)
[constituent notes]	:	[E/G/Ĉ] [D/F/A] [E/G/B] [F/A/Ĉ] [G/B/D] [E/A/Ĉ]

At the beginning

What is the Music Pad?

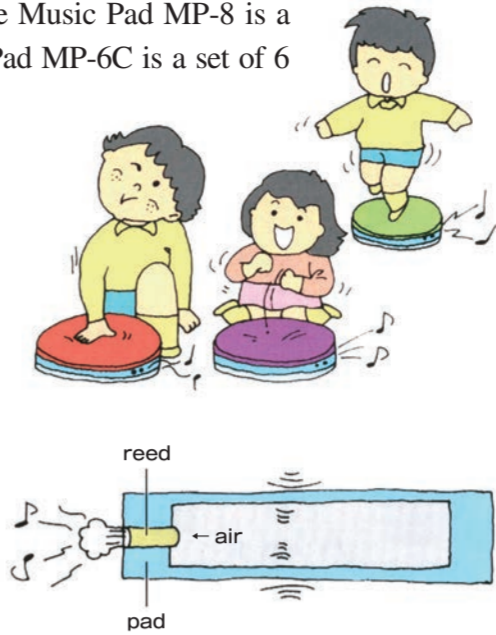
The Music Pad is the pad that produces sound. The Music Pad MP-8 is a set of 8 notes in one octave, and the Chord Music Pad MP-6C is a set of 6 chords in C major consisting of 3 notes.

Size?

The pad has a diameter of 30 centimeter and 4.2 centimeter thick.

How is the sound made?

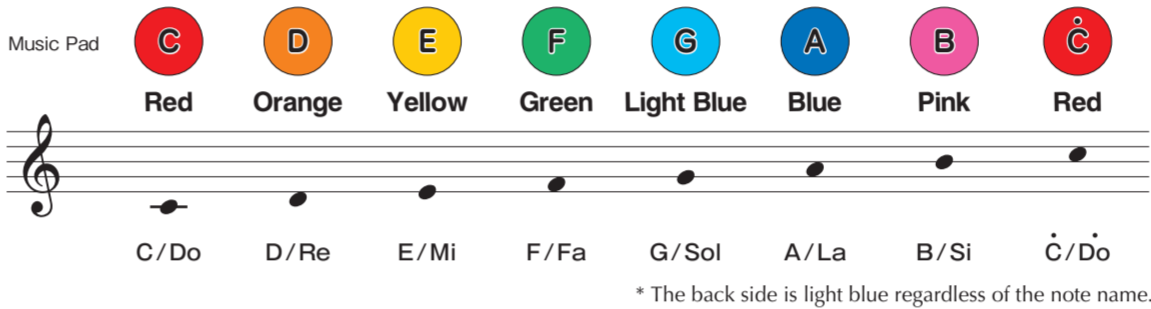
The sound is made by pushing the middle of the Music Pad with the hands or feet(avoid striking with any object, which could cause damage). The instrument makes the sound with reeds which vibrate when air is pushed through. Pressing harder will make the sound louder.



How many to a set?

MUSIC PAD MP-8

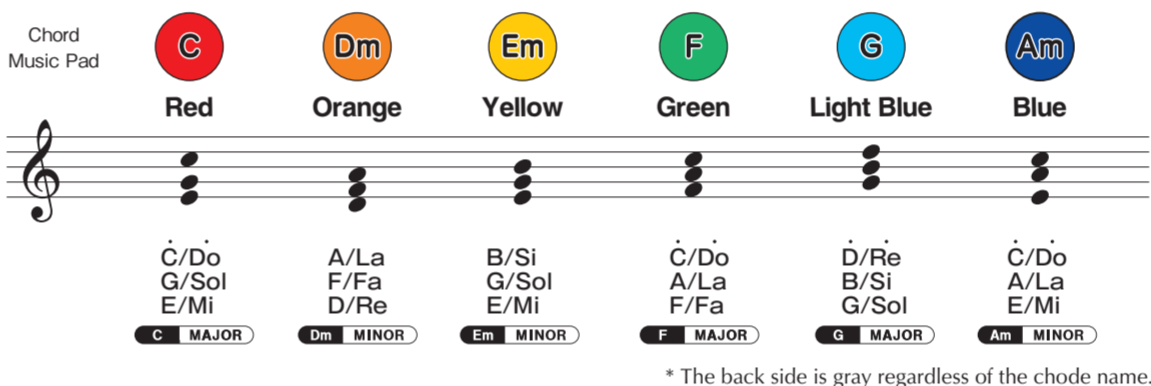
From the low note, there are 8 different notes, C/Do, D/Re, E/Mi, F/Fa, G/Sol, A/La, B/Si. That is a one octave range.



* The back side is light blue regardless of the note name.

CHORD MUSIC PAD MP-6C

In order from the lowest, there are 6 chodes, C, Dm, Em, F, G, and Am.



* The back side is gray regardless of the chode name.

Let's play

Press with the hand

Please press in the middle of the Music Pad with the hand. Does it make a sound? If you press near the edge, it will not make a sound, so please remember to press near the centre.



Push with the hand

There will be a difference in loudness when you push with the fist or the palm. You can make the note sound longer or shorter depending on how the note is pushed.



Let's step on

Let's step on the pad and make it sound. The sound will be louder and sharper than when you play it by hand.

Draw 8 steps of stairs on the floor with masking tape, arrange the pads on the stairs in order from the lowest note, and step on it everyone together, and the high or low pitch of the sound also can be experienced. (MP-8)



Let's play!

You can enjoy playing with MP-8 and MP-6C respectively, but by combining the two sets, you can further expand the range of expression and do a fulfilling activities. Here, we introduce the fun ways to play with the Music Pad series.

Sound Quiz

Pads to use : MP-8x1set (C, D, E, F, G, A, B, Ĉ)
Played by 1-3 persons
Objective: Develop the sensation of sound

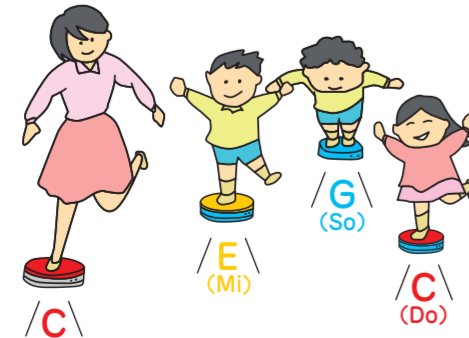
- Set the Music Pad on the flat floor
- Teacher play the sound with the instruments (Organ or Melodion).
- As soon as one recognize the sound the teacher played, sit on the same key of the Music Pad.
- Once getting used to it, play the chord sound (like C/E/G triad) and learn the note of the chord.



Chord group finding game

Pads to use :
MP-8x3sets (D×2, E×3, F×2, G×3, A×3, B×2, Ĉ×3)*
MP-6Cx1set (C, Dm, Em, F, G, Am)
Played by 18 persons
Objective: Feel the sound of chords

- Select the three notes that make up each chord of MP-6C from MP-8, and group them, and place them on a flat floor.
- Create a group of three and assign the chords of ①. Each person is in charge of one pad.
- The teacher plays chords with MP-6C. Feeling the sound, and a group of the same constituent notes makes a sound.
- Once you get used to it, try to imitate the rhythm of the teacher's chords.
♪(C)・♪(C)・♪(C)→ The person in charge of the "C/Do", "E/Mi", and "G/So" pads play the note at the same time and then make them chord.



Summ, summ, summ

Pads to use : MP-8 (C, D, E, F, G)
MP-6C (C, G)

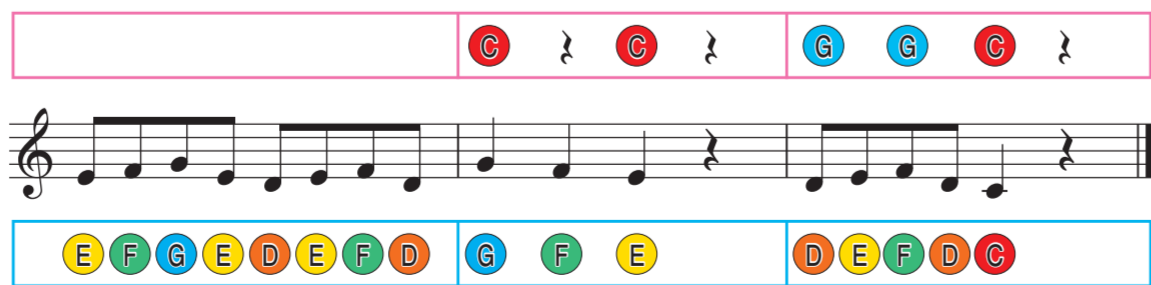
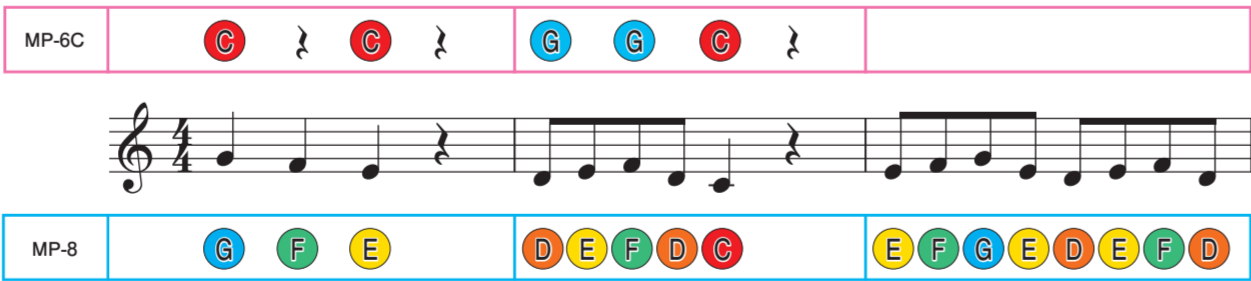
Played by 7 or more persons

Objective: Develop a sense of pitch and rhythm

The melody is by "Music Pad" and the accompaniment is by "Chord Music Pad" and let's play an ensemble.

Summ, summ, summ

Bohemian folk song



株式会社 鈴木楽器製作所
〒430-0852 静岡県浜松市中区領家2-25-7 ☎(053)461-2325

www.suzuki-music.co.jp
メールでのお問い合わせは下記まで
info@suzuki-music.co.jp

SUZUKI MUSICAL INST. MFG. CO., LTD.
2-25-7 Ryoike Naka-ku Hamamatsu Japan
suzukimusic-global.com

ミュージックパッドシリーズ取扱説明書 MUSIC PAD SERIES OWNER'S MANUAL

MUSIC PAD MP-8 / CHORD MUSIC PAD MP-6C

ミュージックパッドであそぼう



この度は、弊社製品をお買い上げくださいますありがとうございます。本製品を末長く安全にご使用いただくためこの取扱説明書をよくお読みください。お読みになった取扱説明書はなくさないように大切に保管してください。

We are pleased to introduce to you our product.
For your safety and long term use of this product, please read and follow this instruction manual.
Thank you very much for your purchase.



* MP-8 has two types of "Do" sounds, but you may use either low "C/Do" or high "C/Do". Please refer to pages 2 and 3 for the constituent notes of the Chord Music Pad.

